

HVA30 Universal HV test system



Features

- Lightweight portable unit
- Solid state air insulated design
- True sine wave low frequency output
- Suitable for VLF, DC and Jacket/sheath testing
- Fault conditioning capability
- Test result storage capability
- Full short circuit protection with arc management regulation
- Provides compliance with CENELEC, IEEE 400.2, VDE 0296 and other international standards
- Manual or fully automatic test sequence selection
- Real-time display of actual output waveform

Applications

The HVA30 provides the testing and commissioning engineer with a versatile high voltage power source suitable for testing electrical plant including cables: XLPE, PE, EPR, PILC etc, capacitors, switchgear, transformers, rotating machines, insulators and bushings.

Description

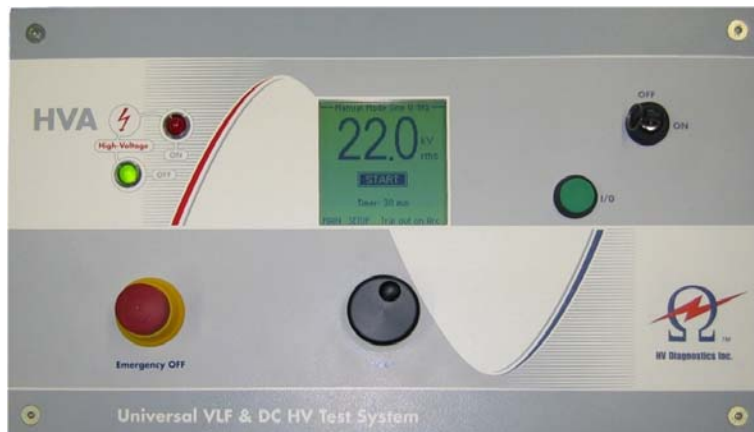
It is well known that DC testing of aged extruded cable such as XLPE and EPR is potentially damaging to the cable insulation causing premature failure of the cable under service conditions. Any form of DC testing has been found to be ineffective in detecting even serious faults in such cables. It is because of these limitations that International and National bodies such as CENELEC, VDE, SABS and the IEEE now recommend testing utilising low frequency AC test systems. VLF testing enables the cable test engineer to detect insulation defects before the cable fails in service.

Product design

The **HVA30** has a very advantageous power / weight ratio. At 19.8 kgs the **HVA30** is one the lightest VLF test systems available today. Apart from the VLF output the **HVA30** can also produce either polarity DC together with a cable sheath /jacket testing modes. The output test sequences, which are easily set by the operator, can be either set manual or fully automatic operation. In the VLF mode the **HVA30** will output 33kV peak into a 0.5 μ F at 0.1Hz. However, as the VLF frequency can be adjusted, loads of up to 2.5 μ F can be tested with an output frequency of 0.02Hz. The output VLF waveform is load independent and symmetrical thus avoiding destructive space charge effects caused by DC polarisation. To further assist the operator the **HVA30** will automatically calculate the optimum output frequency for larger loads. All test results are stored on a on-volatile memory for downloading to a PC for review and analysis.



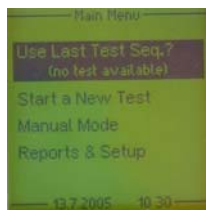
HV Diagnostics International



HVA front panel

The HVA front panel controls are simple and very easy to use. The backlit LCD display keeps the operator fully informed during the testing procedure.

All testing modes and operations are continually updated on the LCD screen.



Setup Screen

The initial screen giving the operator the test options. Selection is made by utilising the front panel digital control wheel.



0.1Hz sinusoid screen

In the testing screen all measured parameters are displayed. In addition the status of the VLF waveform is also shown together with the exact position in the cycle.

The screen shown is displaying a 0.1Hz sinusoidal waveform.



0.1Hz square wave screen

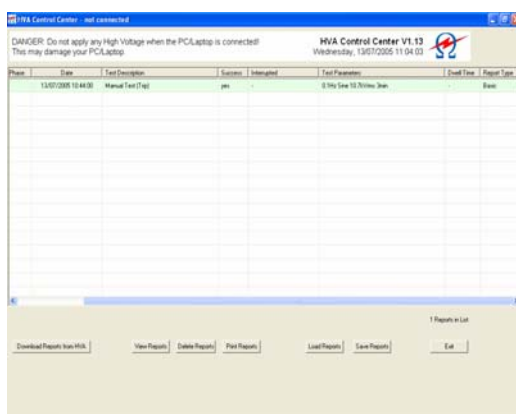
The LCD screen will also show all the other output voltage conditions.

Shown here is the square wave output. The like the above screen the status of the waveform is also shown together with the exact position in



The reporting screen

The report screen gives the operator all the test results which can then be downloaded to a laptop or PC.



The HVA results software

The results screen gives all the test data including cable type, location and all the test parameters measured during the testing process.



Technical Data

Input voltage	88 — 264 V 50 / 60Hz single phase
Output voltage	Sinusoidal: 0 — 33kV peak DC: ± 0 — 30kV Square wave: 0 — 33kV peak Accuracy: $\pm 1\%$
Output current	0 — 15mA. Resolution 1 μ A Accuracy: $\pm 1\%$
Resistance range	0.1M Ω - 5G Ω
Output frequency	0.02 - 0.1 Hz. In steps of 0.01 Hz
Output load	0.5 μ F at 0.1Hz at 23kV rms (approx 1.75km of cable)* 1.0 μ F at 0.05Hz at 23kV rms (approx 3.5km of cable)* 2.5 μ F at 0.02Hz at 23kV rms (approx 8.75km of cable)* 5 μ F at reduced voltage and/or frequency * based on 330pF/metre
Output mode	AC (VLF) Symmetrical and load independent over full range DC positive and negative polarity Burn / Fault condition or Fault trip mode Jacket / Sheath testing
Memory	Up to 50 test records stored in a non-volatile memory
Metering	Output voltage and current (true RMS and Peak) Capacitance, Resistance, Time, Flashover voltage
Weight	19.8kgs (44lbs)
Dimensions	430 L x 360 W x 250 H mm (17" L x 14" W x 10" H)
Computer interface	RS232. Results download software is included
Accessories supplied	Mains cable, HV output cable earth cable, RS232 cable Operating manual
Standards	Shock : IEC68-2-27 (15g/11ms half sinus) Vibration: IEC68-2-6 (10.....150Hz : 2g EMC: IEC6100-4-2, IEC6100-4-4, EN55011 Safety: EN60950, EN50191, EN61010-1
Temperature	Storage: -25° C to +70°C Operating: -5°C to +45°C Auto shut down will occur when the internal temperature exceeds +65°C
Safety	Short circuit protection Display indicates all important function and messages Emergency OFF and operator lockout key Automatic discharge and earthing of load Zero output voltage interlock Zero voltage switching



Part Number	Description
--------------------	--------------------

700 004	H V Test lead with quick coupling connector (4.5M / 15')
700 002	Auxiliary DC power pack with integrated charger. Power pack attaches directly
700 005	Transport case housing the HVA30 together with all required cables.

NOTE: *Due to Company's continuous development program the information detailed in this document may change without previous notification.*

Contact details

North American Office:

HV Diagnostics Inc
271 Rope Mill Pkwy, Ste 2
Woodstock
GA
30188
USA

Telephone: +1 678 445 2555
Fax: +1 678 445 2557
E-mail: sales@hvdiagnostics.com

European Office:

HV Diagnostics International
7 Windy Wood
Godalming
Surrey
GU7 1XX

Telephone: +44 (0)1483 423545
Fax: +44 (0)1483 423545
Mobile: +44 (0) 7714 661041

E-mail: sales@hvdiagnostics.com

United Kingdom

Middle Eastern Office:

All enquiries from the Middle East should be directed to the European office

Registered Office:

HV Diagnostics International
Puits-Godet 10A
CP69 2002
Switzerland

Web site:

www.hvdiagnostics.com



HV Diagnostics International

Leaders in VLF technology